

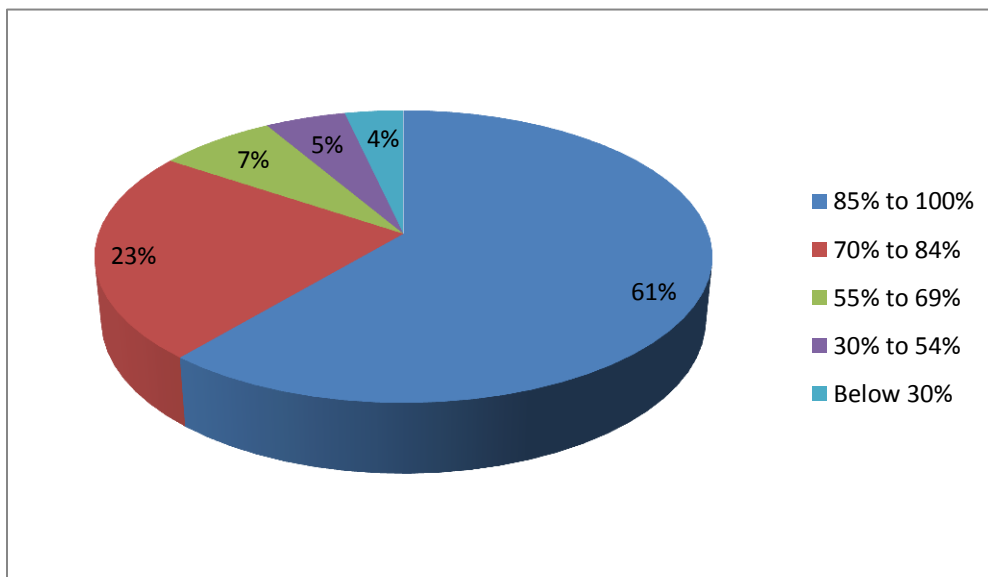
2.7.1 Student Satisfaction Survey Analysis for Year 2019-20

During the academic year 2019-20 total number of students enrolled are 480. We have taken offline Student Satisfaction Survey. Out of 480 students 224 students participated in this survey.

Q.1 How much of the syllabus was covered in class?

- 4 – 85 to 100%
- 3 – 70 to 84%
- 2 – 55 to 69%
- 1– 30 to 54%
- 0 –Below 30%

Choice Number / Remark	Students gives responses
4- 85% to 100%	137
3-70% to 84%	52
2-55% to 69%	16
1-30% to 54%	11
0-Below 30%	8
total	224



Q.2 How well did the teachers Prepare for the classes?

4-Thoroughly

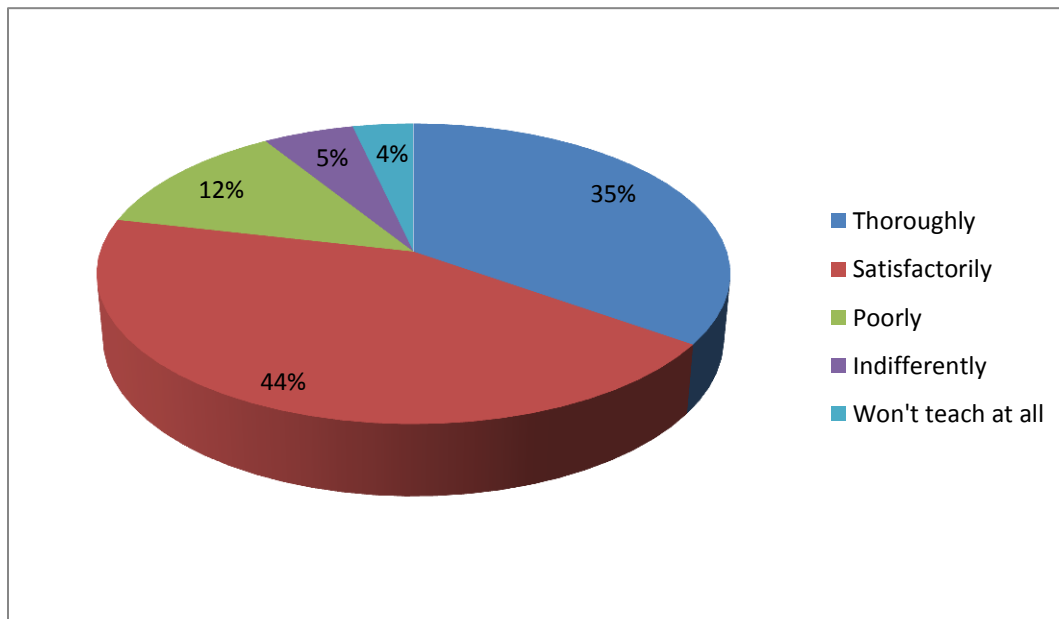
3-Satisfactorily

2-Poorly

1-Indifferently

0-Won't teach at all

Choice Number / Remark	Students gives responses
4-Thoroughly	78
3-Satisfactorily	98
2-Poorly	28
1-Indifferently	12
0-Won't teach at all	8
Total	224



Q.3 How well were the teachers able to communication?

4-Always effective

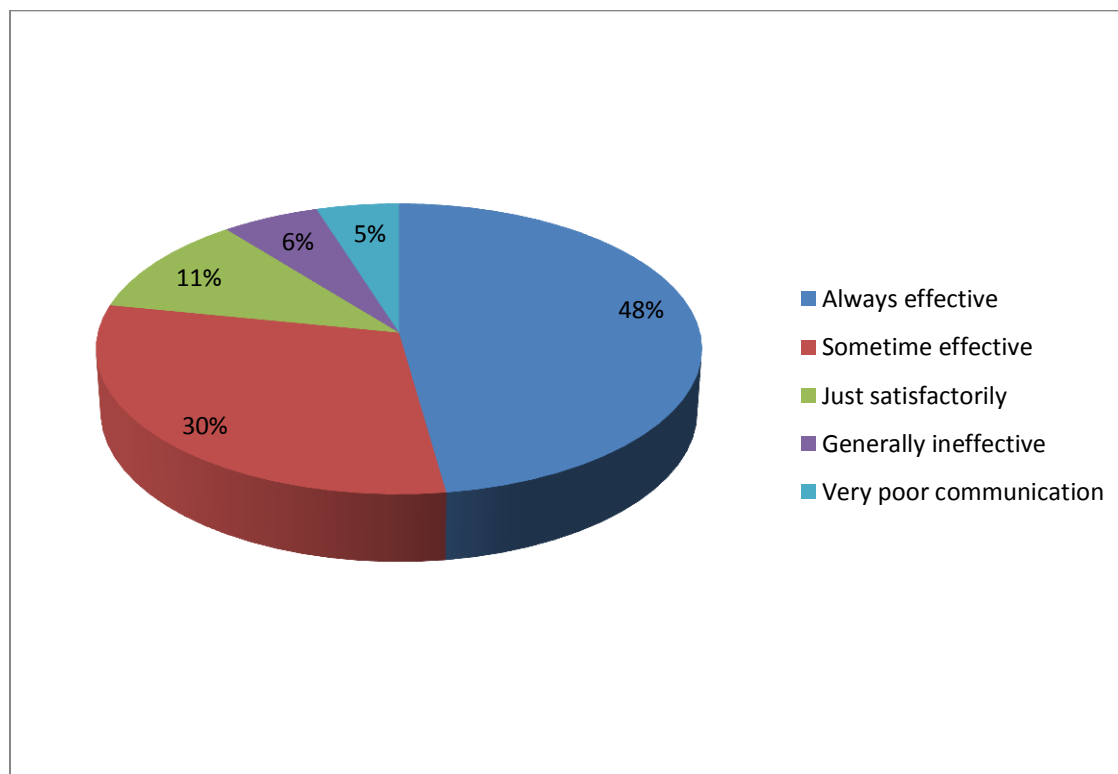
3-Sometime effective

2-Just satisfactorily

1-Generally ineffective

0-Very poor communication

Choice Number / Remark	Students gives responses
4-Always effective	107
3-Sometime effective	68
2-Just satisfactorily	25
1-Generally ineffective	13
0-Very poor communication	11
Total	224



Q.4The teacher approach to teaching can best be described as-

4-Excellent

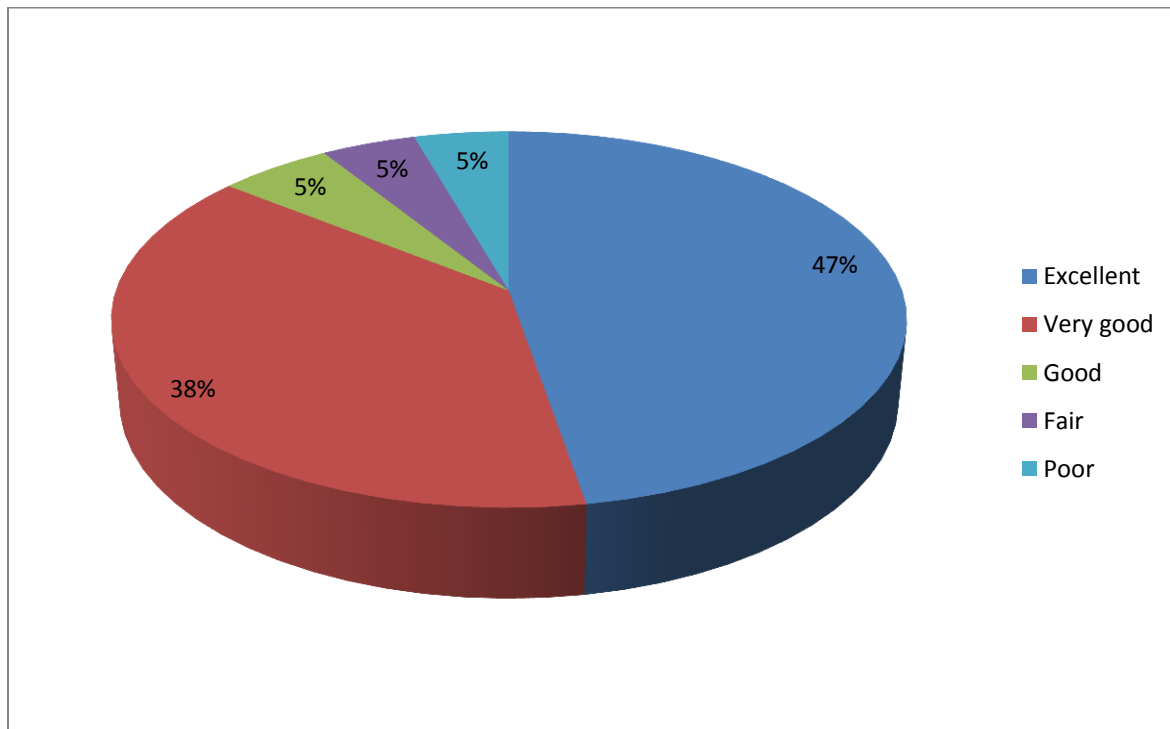
3-Very good

2-Good

1-Fair

0-Poor

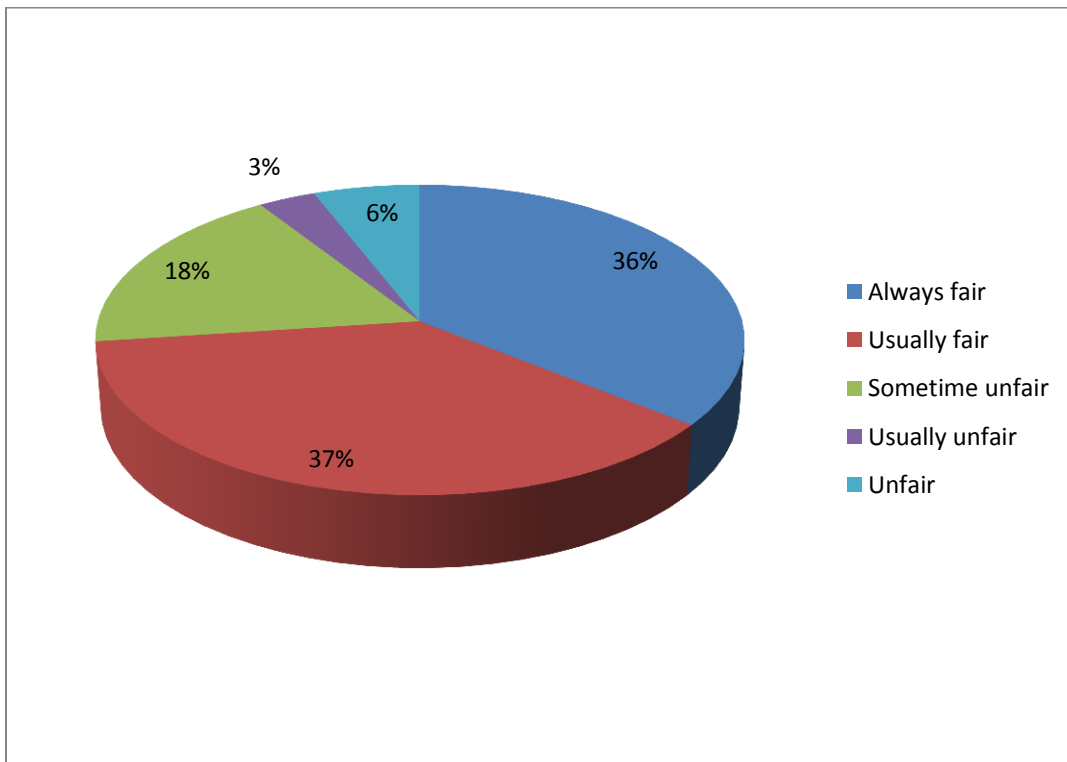
Choice Number / Remark	Students gives responses
4-Excellent	106
3-Very good	86
2-Good	12
1-Fair	10
0-Poor	10
Total	224



Q5 Fairness of the Internal Evaluation Process by the teachers-

- 4-Always fair
- 3-Usually fair
- 2-Sometime unfair
- 1-Usually unfair
- 0-Unfair

Choice Number / Remark	Students gives responses
4-Always fair	78
3-Usually fair	81
2-Sometime unfair	39
1-Usually unfair	7
0-Unfair	13
Total	224



Q.6 Was your performance in assignments discussed with you -

4-Every time

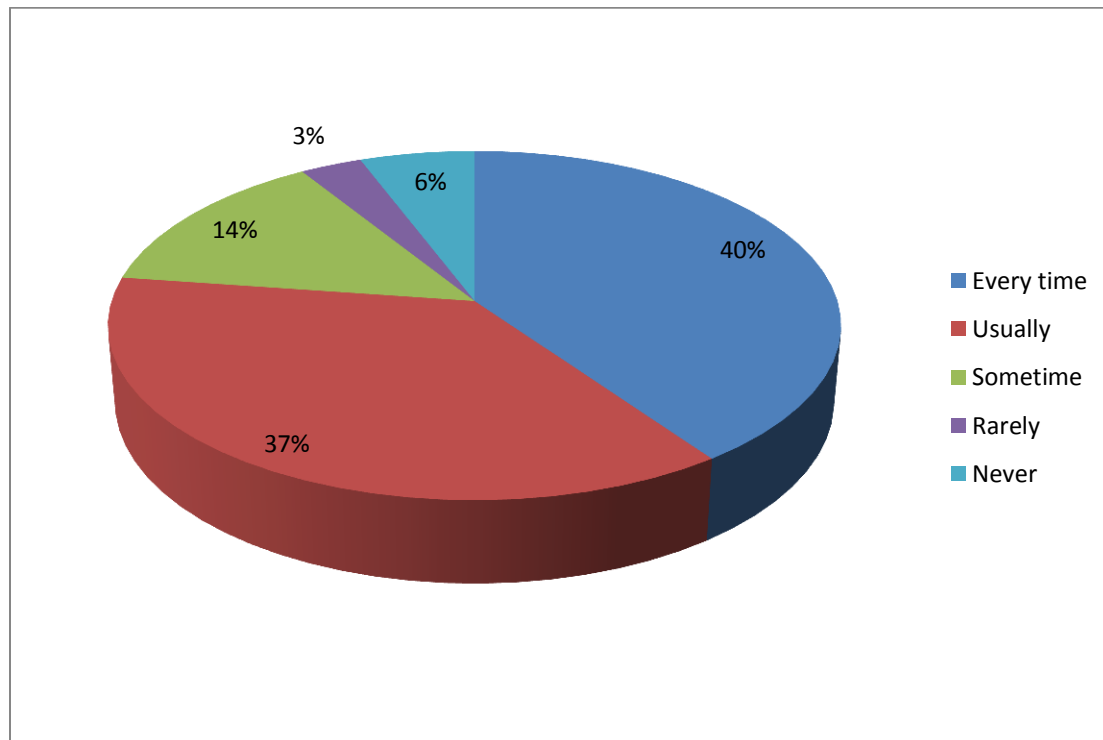
3-Usually

2-Sometime

1-Rarely

0-Never

Choice Number / Remark	Students gives responses
4-Every time	90
3-Usually	83
2-Sometime	31
1-Rarely	7
0-Never	13
Total	224



Q.7The institute takes active interest in promoting internship, student exchange field visit opportunity to students

4-Regularly

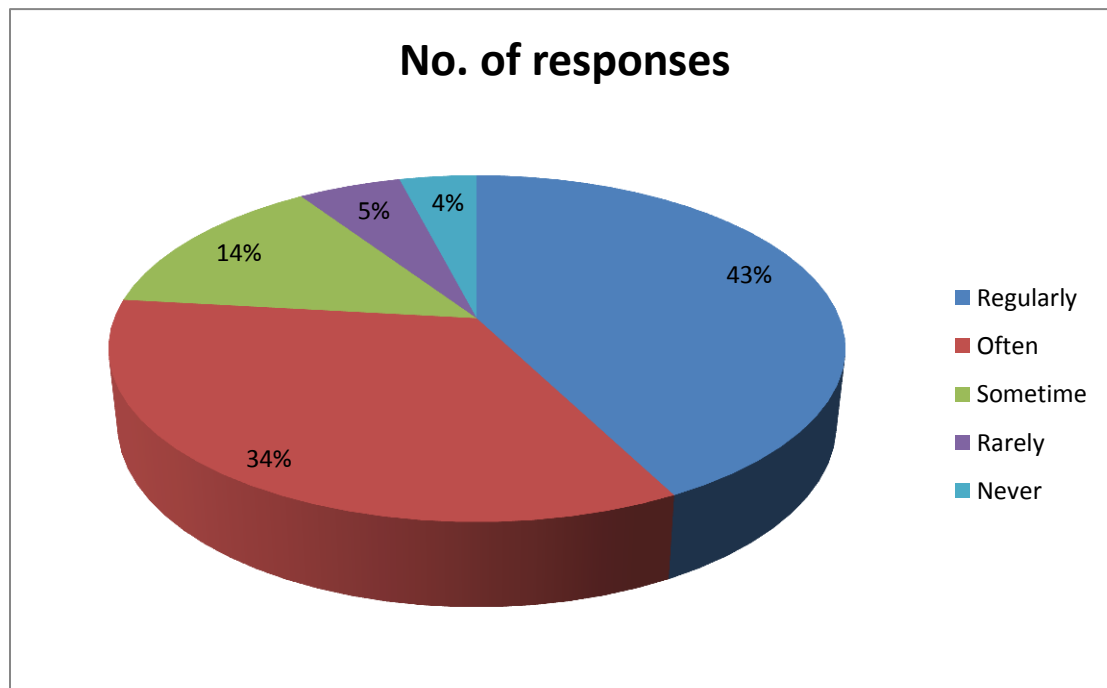
3-Often

2-Sometime

1-Rarely

0-Never

Choice Number / Remark	Students gives responses
4-Regularly	95
3-Often	77
2-Sometime	31
1-Rarely	12
0-Never	9
Total	224



Q.8 The teaching and mentoring process in your institution facilitates you in cognitive, social and emotional growth.

4-Significantly

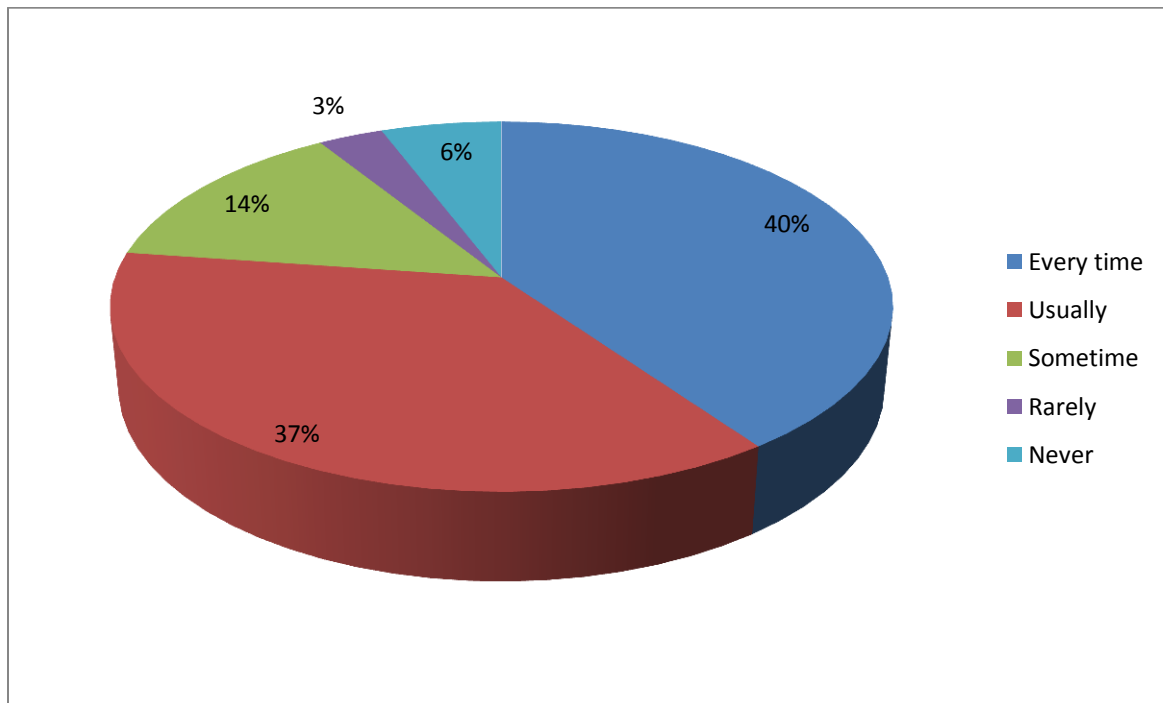
3-Very well

2-Moderately

1-marginally

0-Not at all

Choice Number / Remark	Students gives responses
4-Significantly	102
3-Very well	80
2-Moderately	22
1-marginally	13
0-Not at all	7
Total	224



Q.9 The institute provide opportunity to learn and growth?

4-Strongly agree

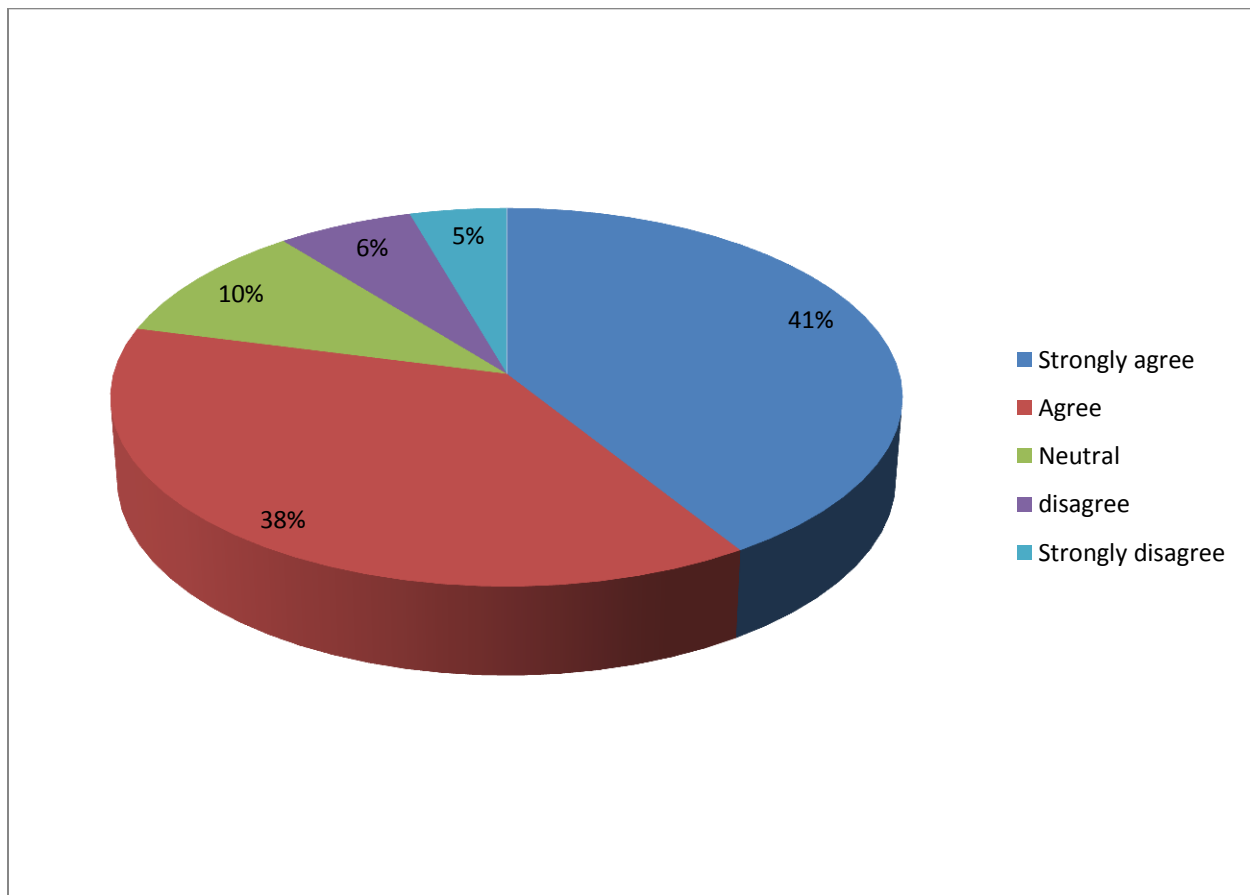
3-Agree

2-Neutral

1-disagree

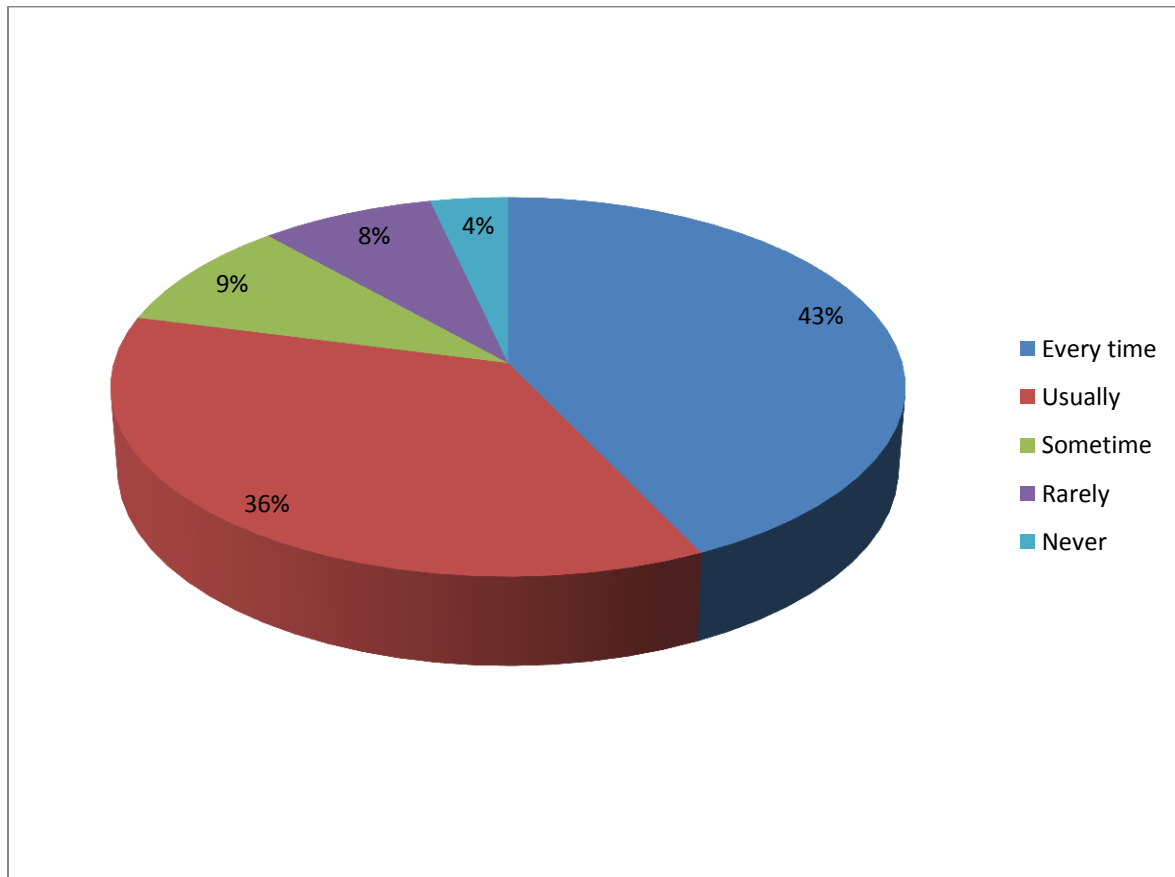
0-Strongly disagree

Choice Number / Remark	Students gives responses
4-Strongly agree	92
3-Agree	85
2-Neutral	23
1-disagree	14
0-Strongly disagree	10
Total	224



Q. 10 Teachers inform you about your expected competencies, course outcomes and programme outcome.

Choice Number / Remark	Students gives responses
Every time	96
Usually	81
Sometime	21
Rarely	18
Never	8
Total	224



Q. 11 Your mentor does a necessary follow-up with an assigned task to you-

4-Every time

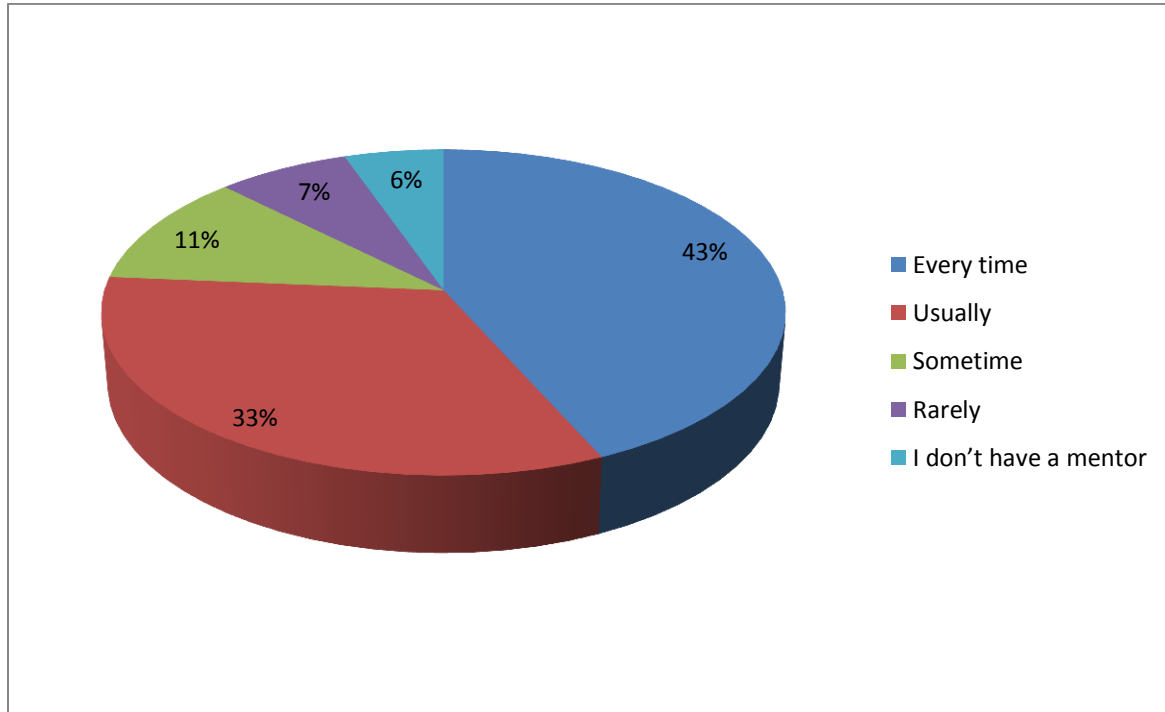
3-Usually

2-Sometime

1-Rarely

0-I don't have a mentor

Choice Number / Remark	Students gives responses
4-Every time	97
3-Usually	74
2-Sometime	25
1-Rarely	16
0-I don't have a mentor	12
Total	224



Q.12 The teacher illustrate the concept through example and applications-

4-Every time

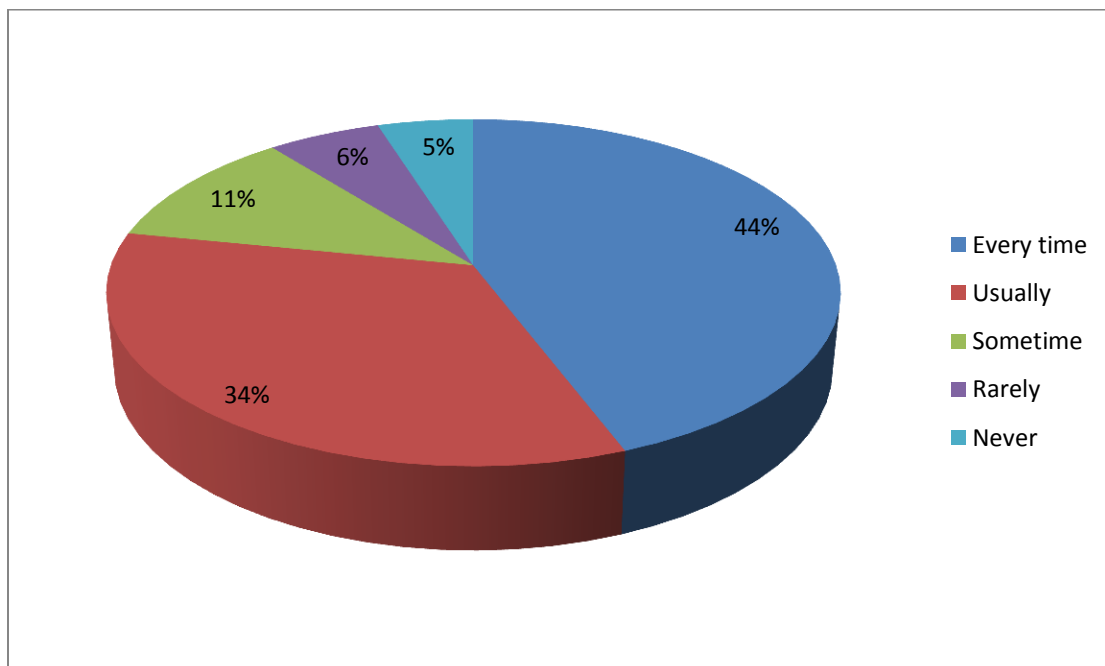
3-Usually

2-Sometime

1-Rarely

0-Never

Choice Number / Remark	Students gives responses
4-Every time	99
3-Usually	76
2-Sometime	25
1-Rarely	13
0-Never	11
Total	224



Q. 13 The teacher identify your strength and encourage you with providing right level of challenges-

4-Fully

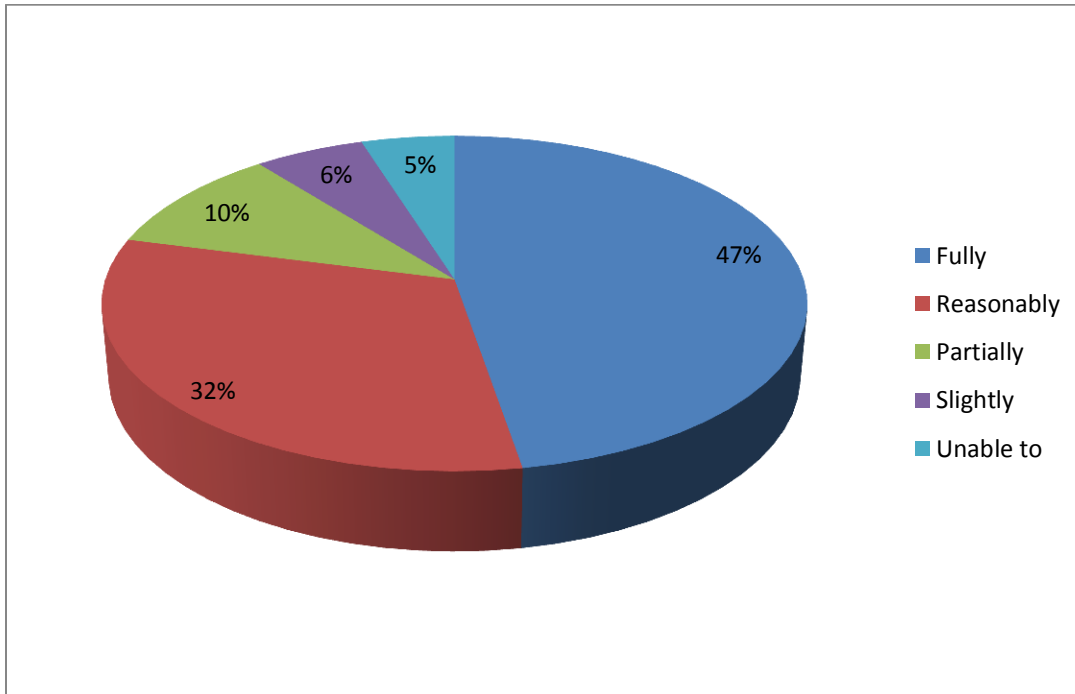
3-Reasonably

2-Partially

1-Slightly

0-Unable to

Choice Number / Remark	Students gives responses
4-Fully	106
3-Reasonably	71
2-Partially	23
1-Slightly	13
0-Unable to	11
Total	224



Q.14 Teacher are able to identify your weaknesses and help you to overcome them-

4-Every time

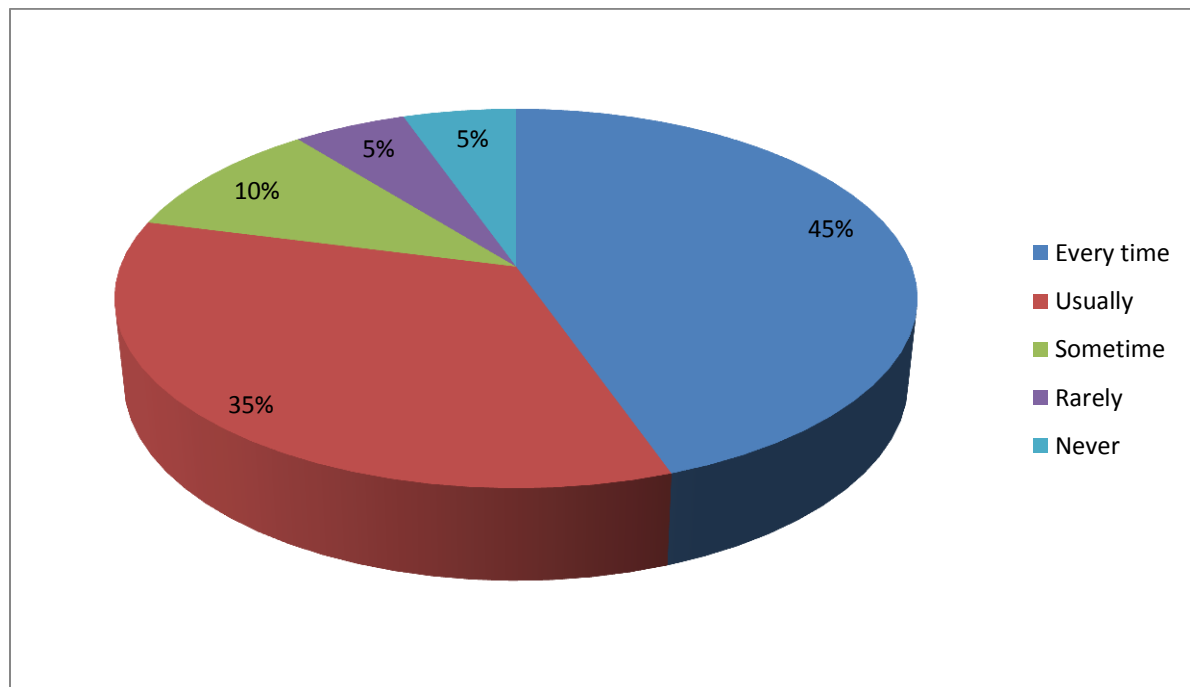
3-Usually

2-Sometime

1-Rarely

0-Never

Choice Number / Remark	Students gives responses
4-Every time	100
3-Usually	77
2-Sometime	23
1-Rarely	12
0-Never	12
Total	224



Q.15 The institute make effort to engage students in the monitoring ,review and continuous quality improvement of the teaching learning process-

4-Strongly agree

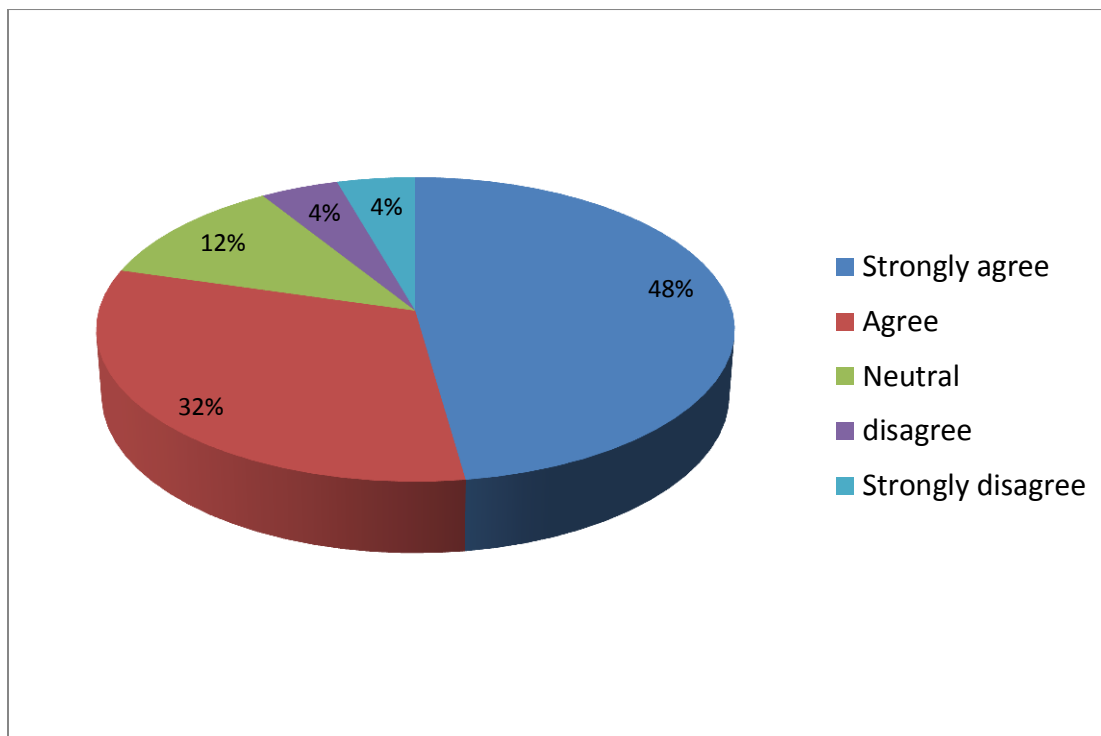
3-Agree

2Neutral

1-disagree

0-Strongly disagree

Choice Number / Remark	Students gives responses
4-Strongly agree	107
3-Agree	71
2Neutral	26
1-disagree	10
0-Strongly disagree	10
Total	224



Q.16 The institute / teachers use student centric methods , such as experiential learning, participative learning and problem solving methodologies for enhancing learning experiences-

4-To great extent

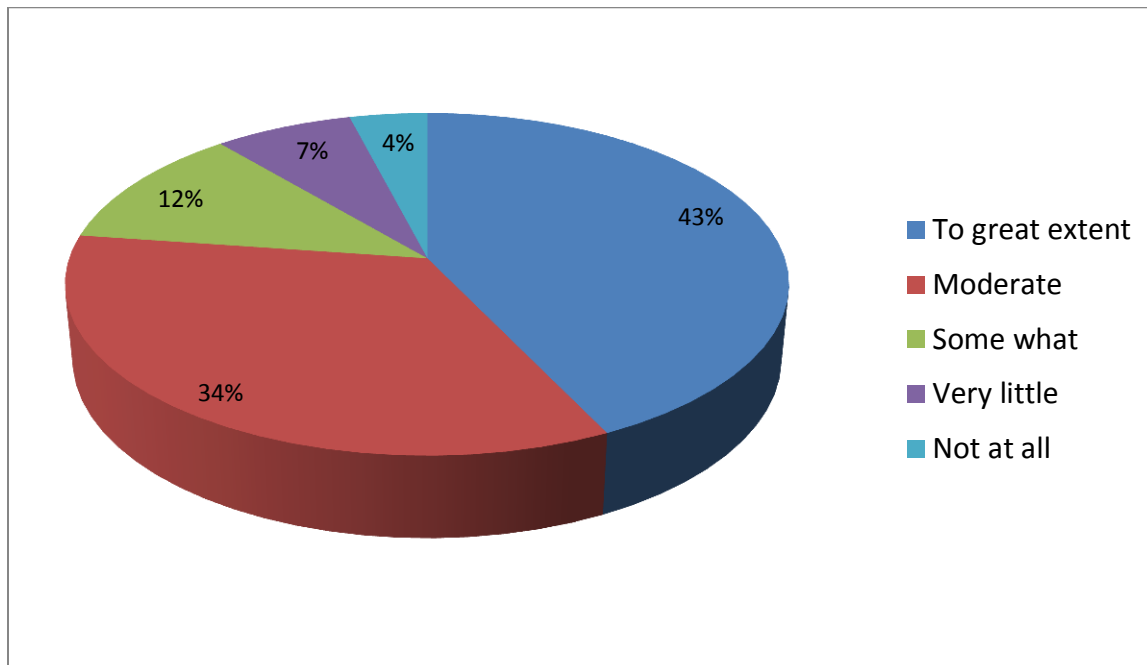
3-Moderate

2-Some what

1-Very little

0-Not at all

Choice Number / Remark	Students gives responses
4-To great extent	96
3-Moderate	77
2-Some what	26
1-Very little	16
0-Not at all	9
Total	224



Q.17 Teachers encourage you to participate in extracurricular activities-

4-Strongly agree

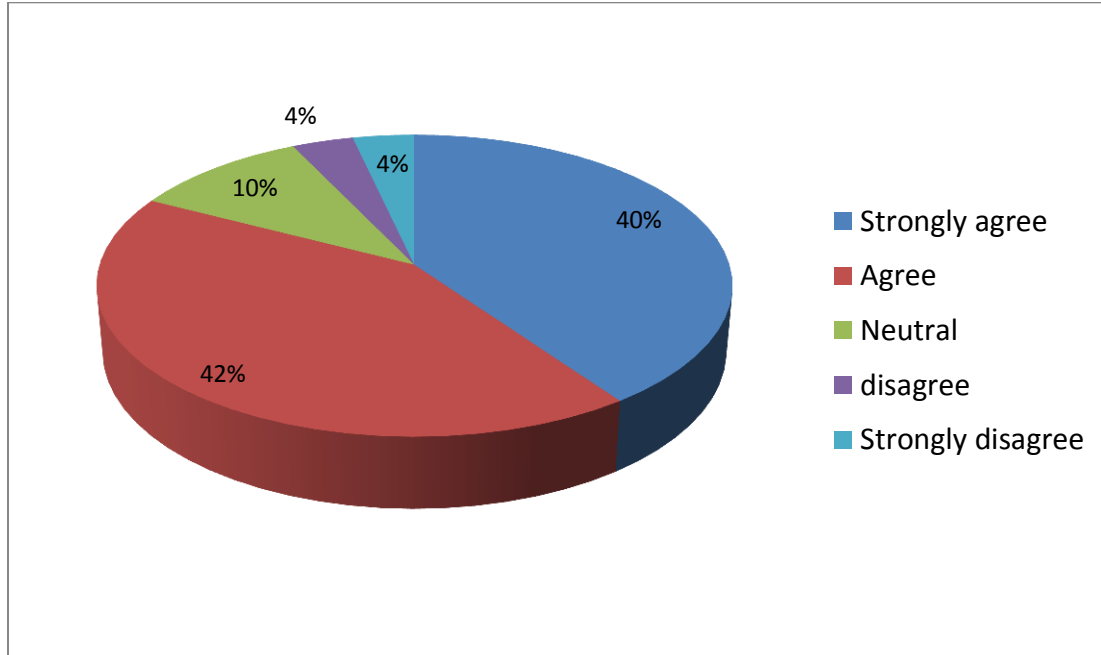
3-Agree

2-Neutral

1-disagree

0-Strongly disagree

Choice Number / Remark	Students gives responses
4-Strongly agree	90
3-Agree	95
2-Neutral	23
1-disagree	8
0-Strongly disagree	8
Total	224



Q.18 Efforts are made by the institute / teachers to inculcate soft skills, life skills and employability skills to make you ready for the world of work –

4-To great extent

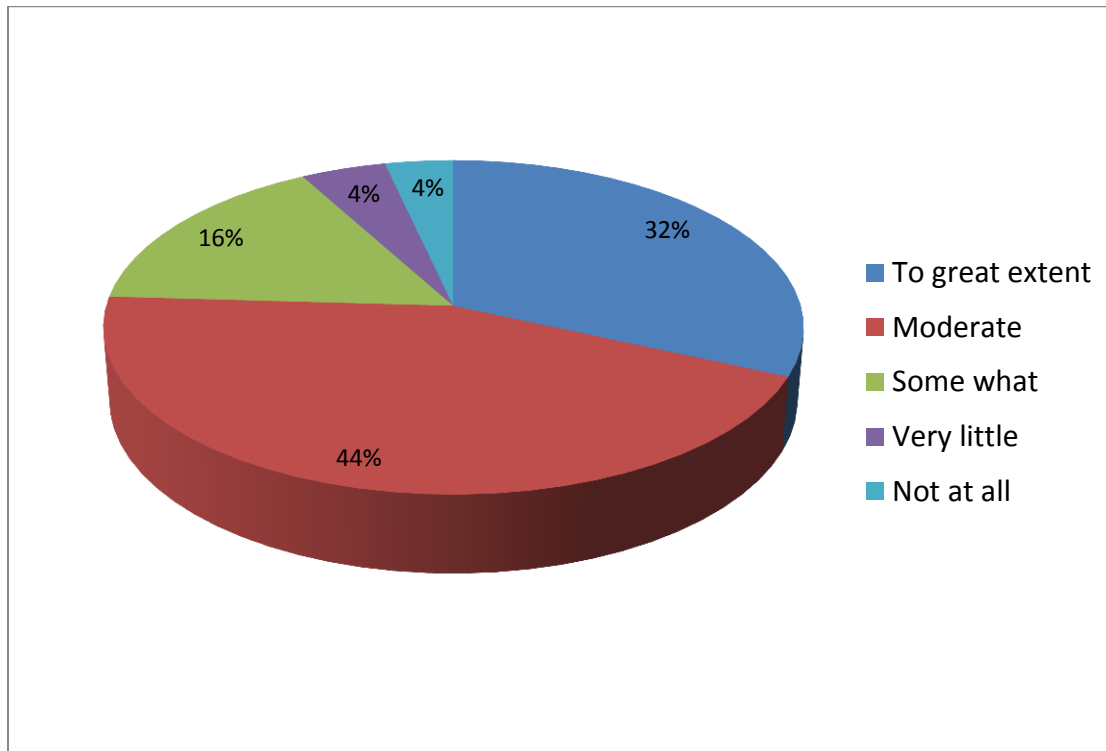
3-Moderate

2-Some what

1-Very little

0-Not at all

Choice Number / Remark	Students gives responses
4-To great extent	71
3-Moderate	99
2-Some what	36
1-Very little	10
0-Not at all	8
Total	224



Q.19 What percentage of teachers used ICT tool such as LCD projector, Multimedia etc. while teaching –

4-Above 90%

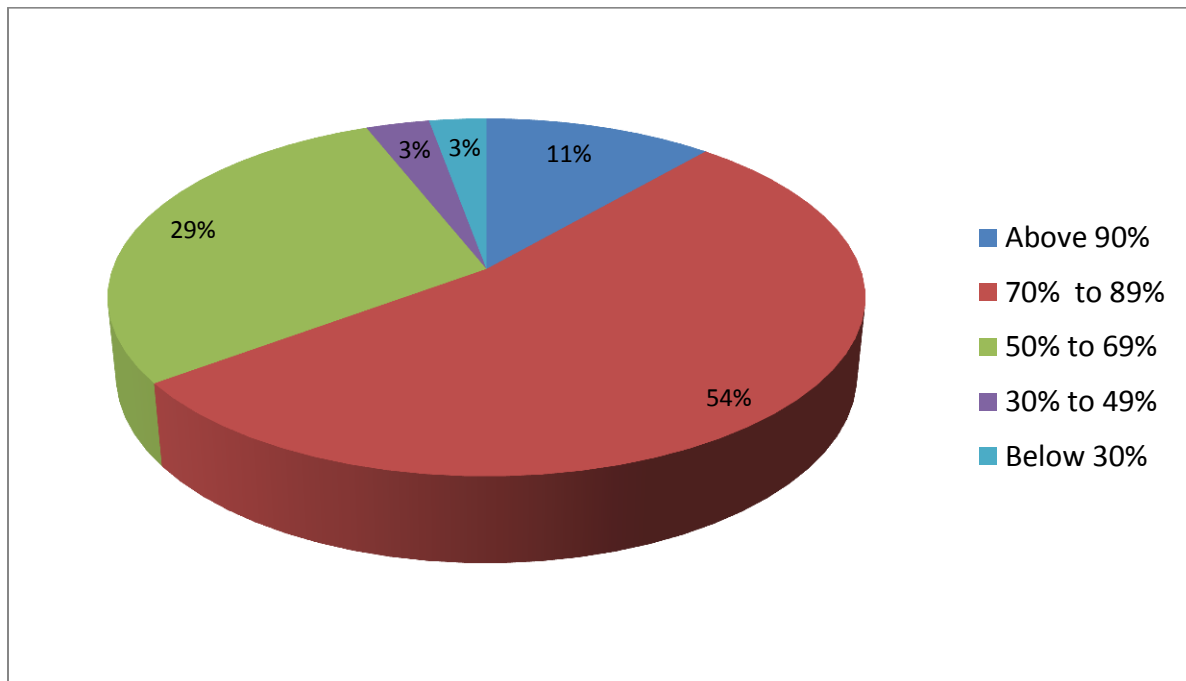
3-70% to 89%

2-50% to 69%

1-30% to 49%

0-Below 30%

Choice Number / Remark	Students gives responses
4-Above 90%	36
3-70% to 89%	169
2-50% to 69%	92
1-30% to 49%	10
0-Below 30%	9
Total	224



Q.20 The overall quality of teaching – learning process in your institute is very good

4-Strongly agree

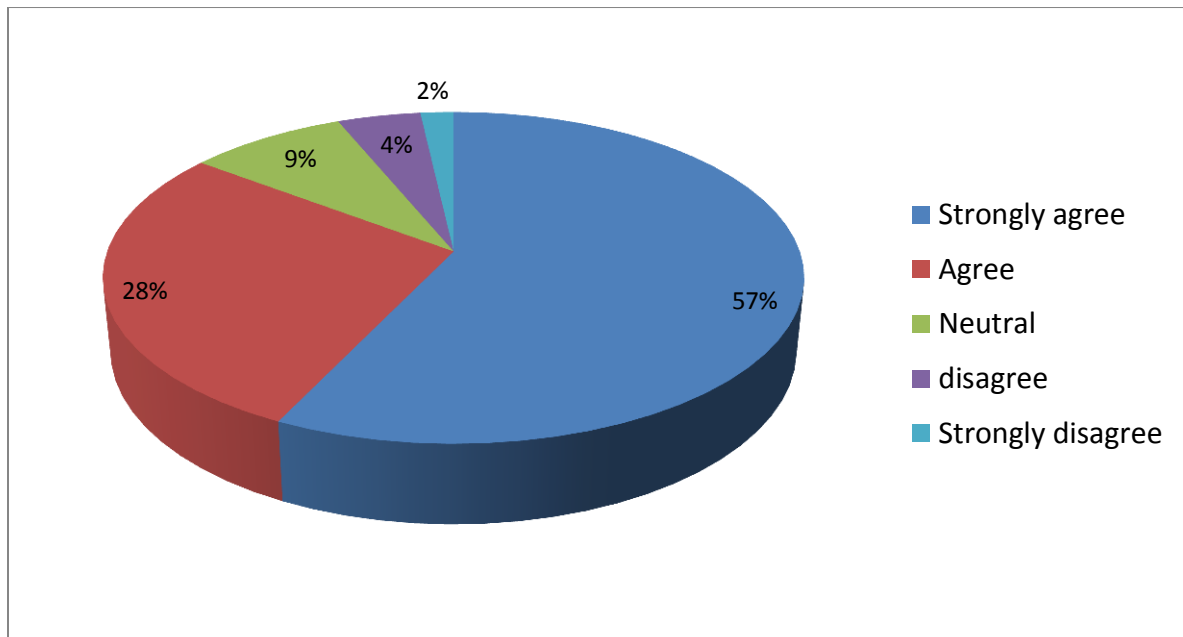
3-Agree

2-Neutral

1-disagree

0-Strongly disagree

Choice Number / Remark	Students gives responses
4-Strongly agree	128
3-Agree	63
2-Neutral	19
1-disagree	10
0-Strongly disagree	4
Total	224



Q.21 Give three observations / suggestions to improve the overall teaching – learning experience in your institution-

1. Increase no. of books in library.
2. Give vital role to student in teaching learning process.
3. Increase no. of reference books in library.
4. Start economics department.
5. Start M.A
6. Provide literature book at library
7. To start a book-bank system for more students
8. To arrange workshops on 'Personality Development' and 'Various Skills'
9. To inspire the students to participate in various 'Cultural Programs.'